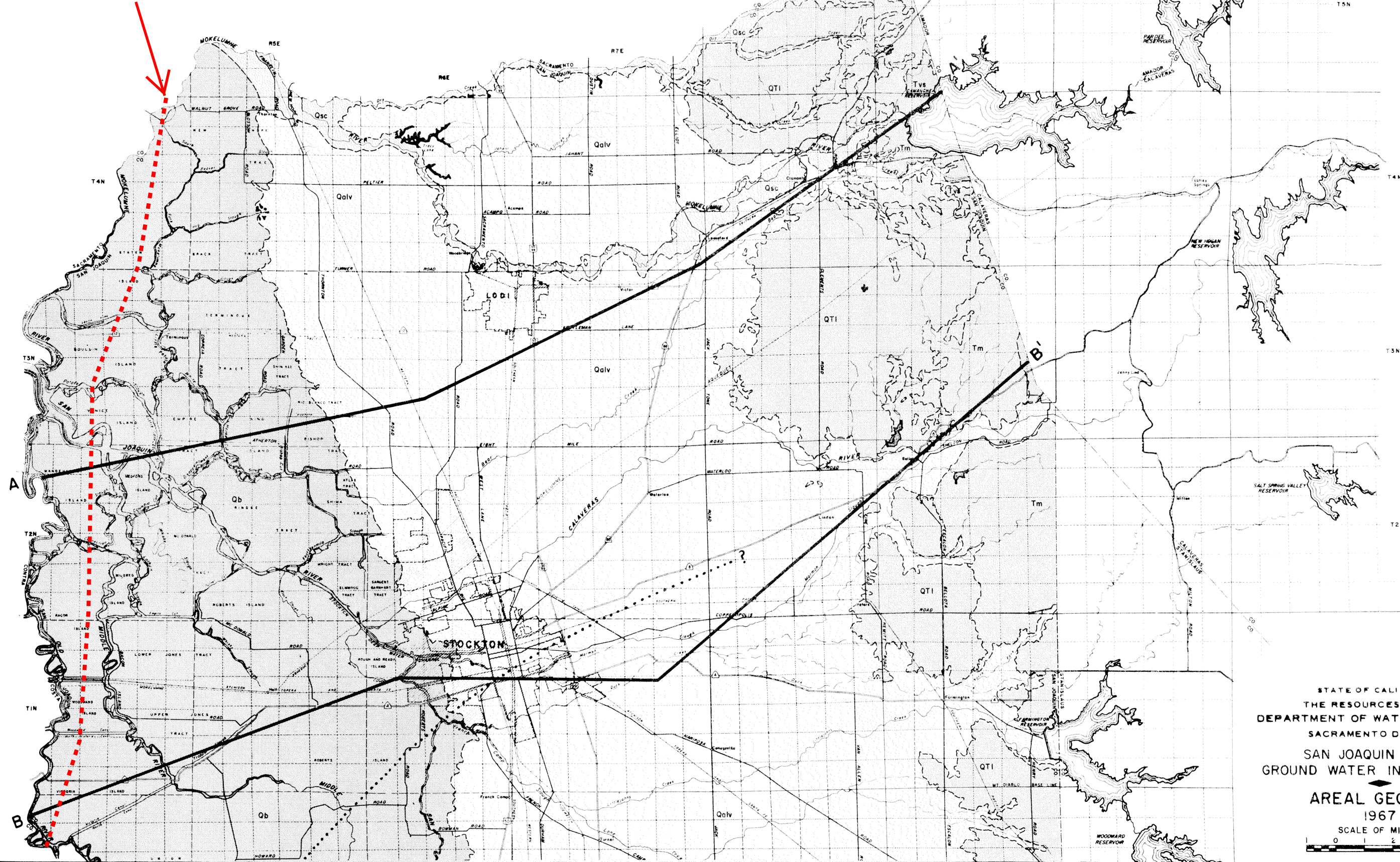


Source: DWR Bulletin 146, 1967

# AquAlliance Exhibit 211A

## WaterFix Tunnel Alt. 4A

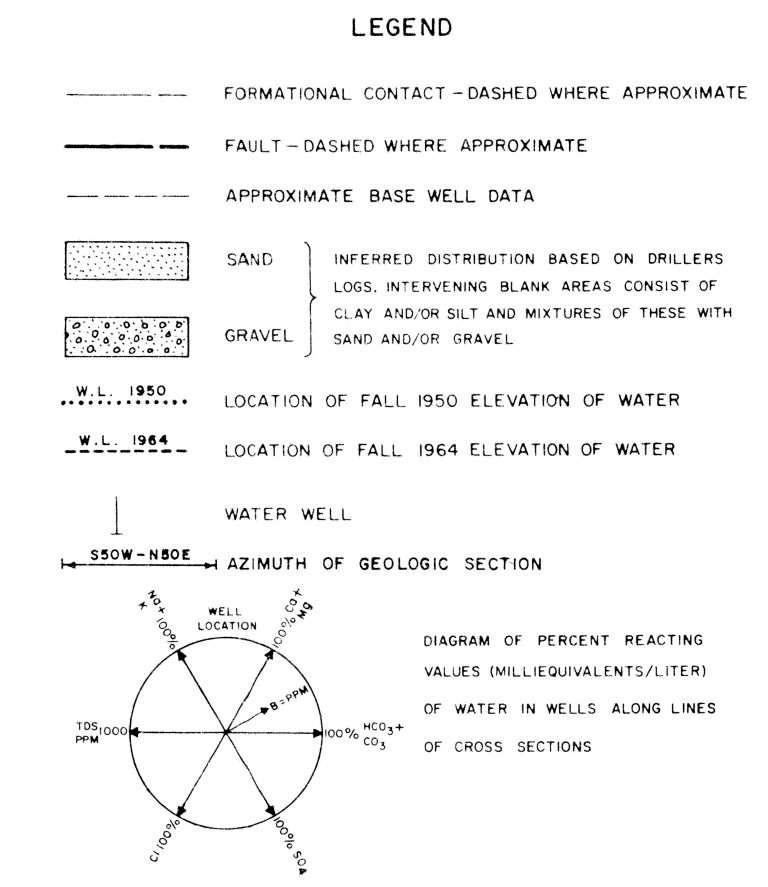
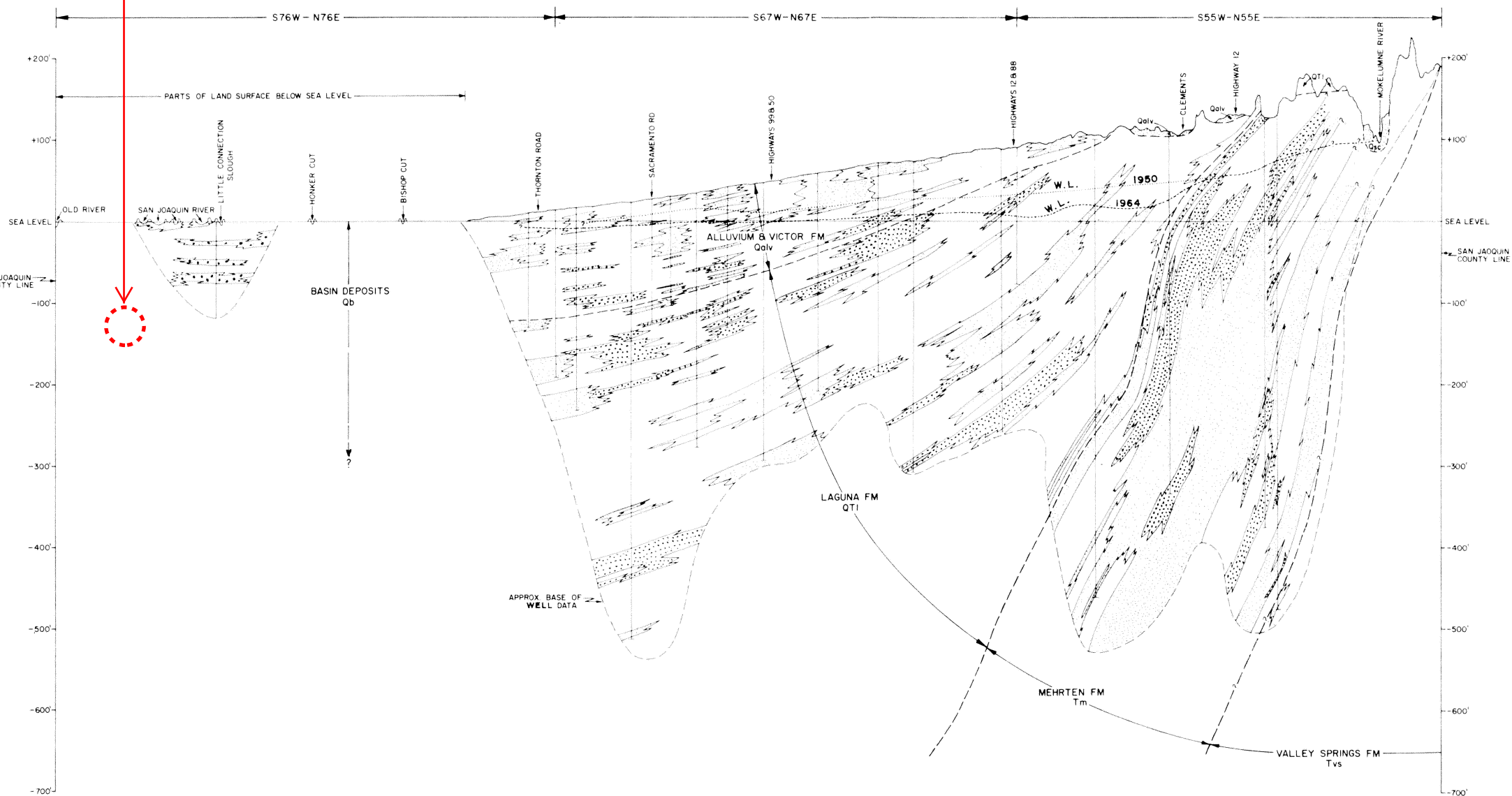


STATE OF CALIFORNIA  
 THE RESOURCES AGENCY  
 DEPARTMENT OF WATER RESOURCES  
 SACRAMENTO DISTRICT  
 SAN JOAQUIN COUNTY  
 GROUND WATER INVESTIGATION  
 AREAL GEOLOGY  
 1967  
 SCALE OF MILES  
 0 1 2 3 4

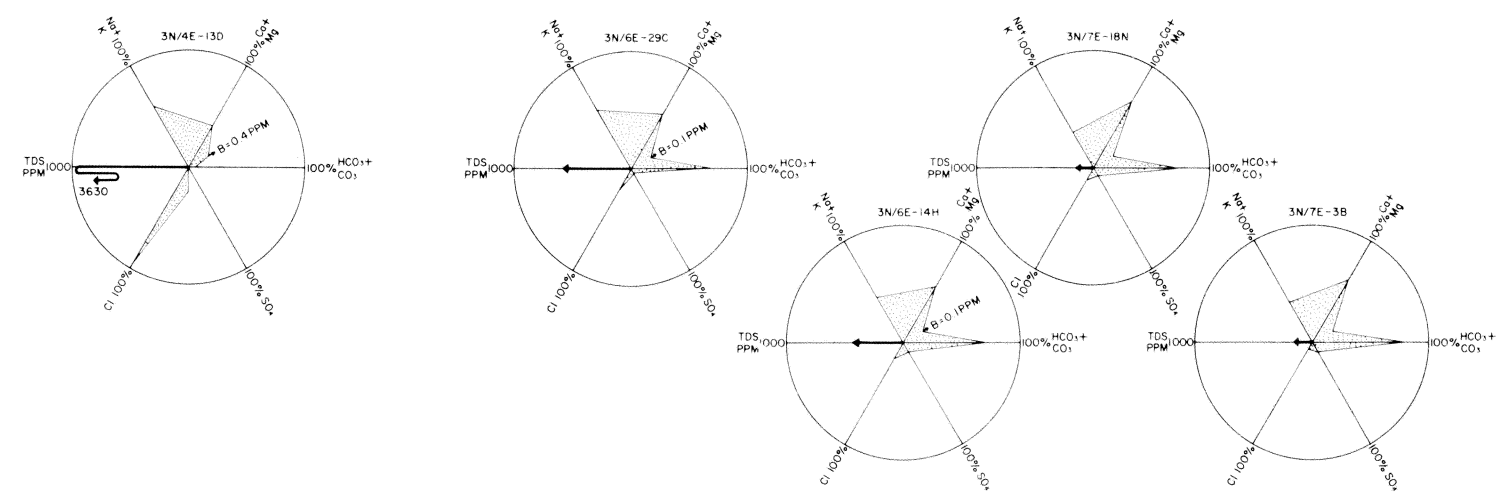
# AquAlliance Exhibit 211B

## WaterFix Tunnel Alt. 4A

### SECTION A-A' (SOUTH LODI)



QUALITY OF WATER IN WELLS ALONG SECTION A-A'

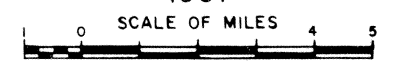


NOTE: THESE QUALITY DIAGRAMS ARE CENTERED AT THEIR APPROXIMATE PROJECTED POSITION IN THE LINE OF GEOLOGIC SECTION.

VERTICAL EXAGGERATION APPROX. 100:1  
SEE PLATE 2A FOR LOCATION OF SECTION

STATE OF CALIFORNIA  
THE RESOURCES AGENCY  
DEPARTMENT OF WATER RESOURCES  
SACRAMENTO DISTRICT  
SAN JOAQUIN COUNTY  
GROUND WATER INVESTIGATION  
GEOLOGIC SECTION A-A'  
(SOUTH LODI)  
1967

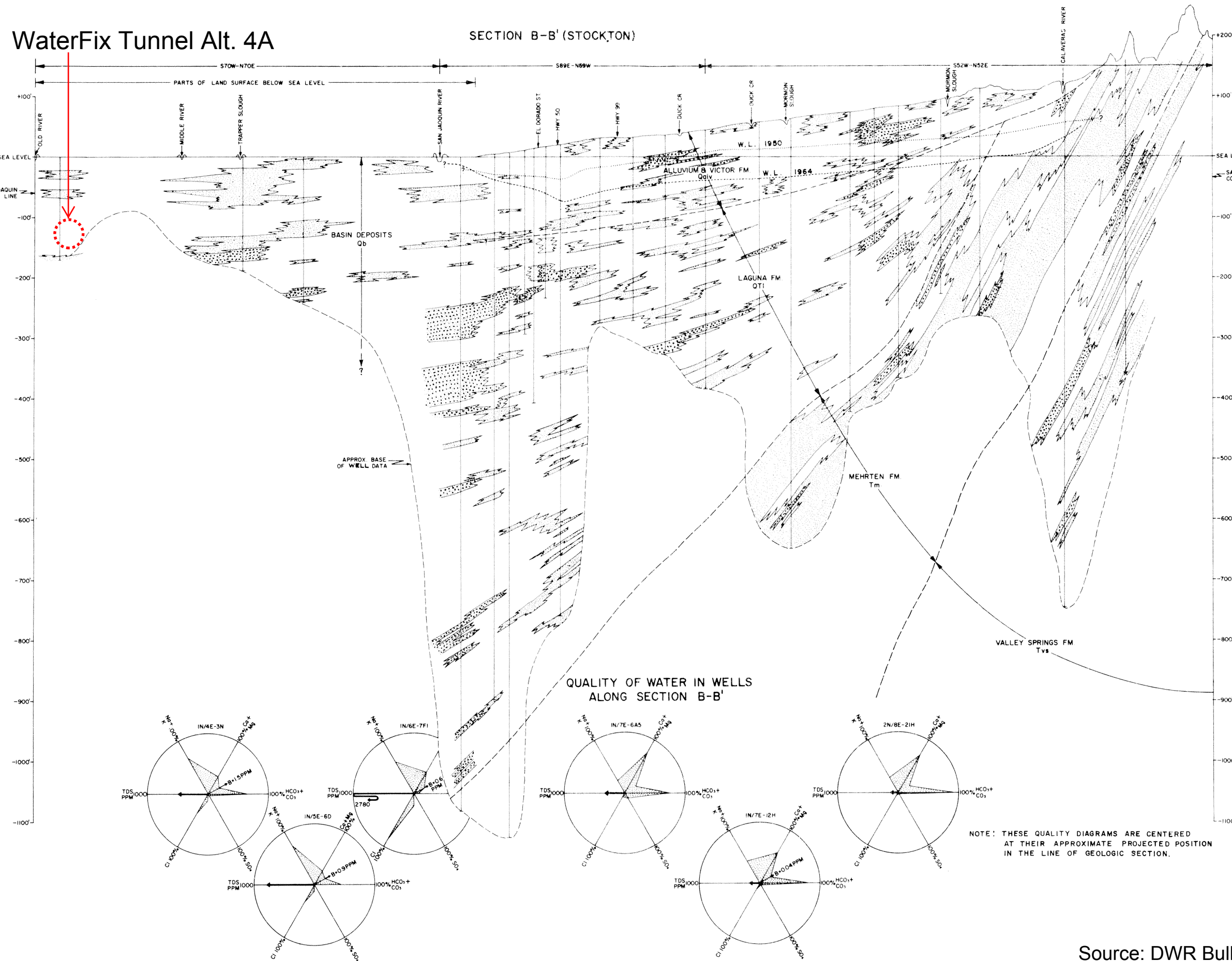
Source: DWR Bulletin 146, 1967



# AquAlliance Exhibit 211C

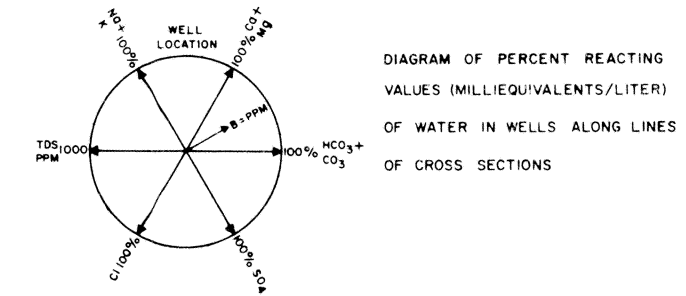
## WaterFix Tunnel Alt. 4A

### SECTION B-B' (STOCKTON)



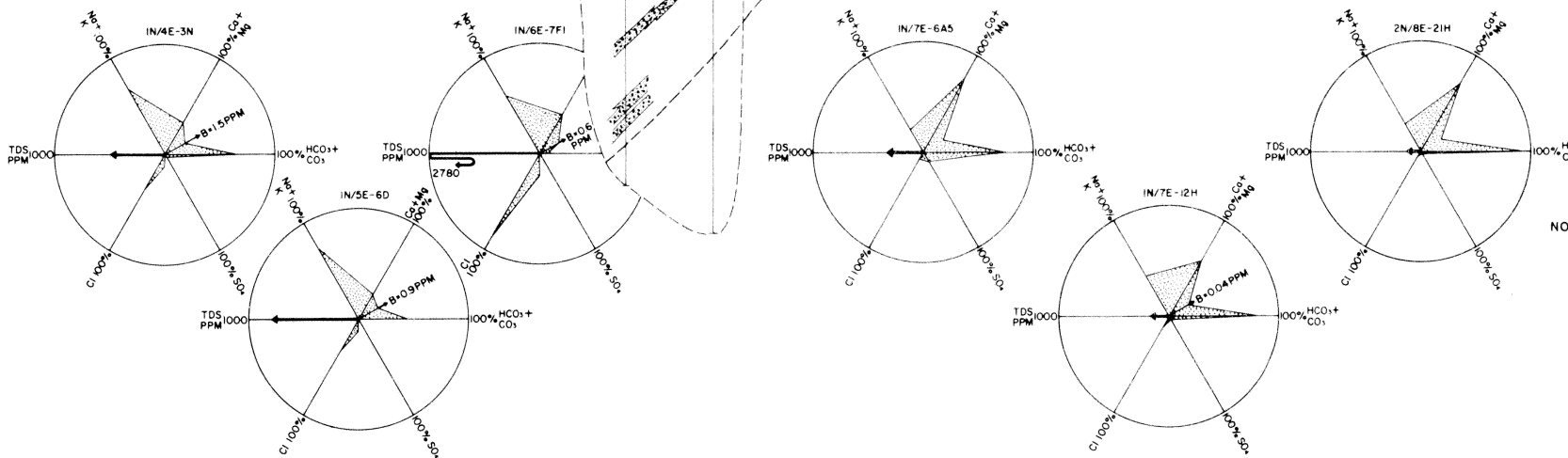
#### LEGEND

- FORMATIONAL CONTACT - DASHED WHERE APPROXIMATE
- FAULT - DASHED WHERE APPROXIMATE
- APPROXIMATE BASE WELL DATA
- [Stippled pattern] SAND } INFERRED DISTRIBUTION BASED ON DRILLERS LOGS. INTERVENING BLANK AREAS CONSIST OF CLAY AND/OR SILT AND MIXTURES OF THESE WITH SAND AND/OR GRAVEL
- [Patterned pattern] GRAVEL
- ..... W.L. 1950 LOCATION OF FALL 1950 ELEVATION OF WATER
- - - - W.L. 1964 LOCATION OF FALL 1964 ELEVATION OF WATER
- ⊥ WATER WELL
- ← S50W - N50E → AZIMUTH OF GEOLOGIC SECTION



VERTICAL EXAGGERATION APPROX. 100:1  
 SEE PLATE 2A FOR LOCATION OF SECTION

#### QUALITY OF WATER IN WELLS ALONG SECTION B-B'



NOTE: THESE QUALITY DIAGRAMS ARE CENTERED AT THEIR APPROXIMATE PROJECTED POSITION IN THE LINE OF GEOLOGIC SECTION.

STATE OF CALIFORNIA  
 THE RESOURCES AGENCY  
 DEPARTMENT OF WATER RESOURCES  
 SACRAMENTO DISTRICT  
 SAN JOAQUIN COUNTY  
 GROUND WATER INVESTIGATION  
 GEOLOGIC SECTION B-B'  
 (STOCKTON)  
 1967

Source: DWR Bulletin 146, 1967

